

Arklow Bank Wind Park 2

Suspended Sediment Concentrations Following Sandwave Clearance for Seabed Preparation for Export Cable Installation and Associated Spoil Disposal at the Zone 5 Disposal Site

Legend

- ABWP2 Array Area
- ABWP2 Cable Corridor and Working Area
- Coastal Processes Study Area
- Special Area of Conservation (SAC)
- Dumping at Sea Location - NE - Zone 5

Suspended Sediment (mg/l)

- 1 - 2.49
- 2.5 - 4.99
- 4.5 - 9.99
- 10 - 19.99
- 20 - 31.7 (31.7 - Average Baseline SSC Value)
- 31.8 - 44.99
- 45 - 54.99
- 55 - 64.99
- 65 - 74.6 (74.6 - Maximum Baseline SSC Value)
- 74.7 - 99.99
- 100 - 249.99
- 250 - 499.99
- 500 - 999.99
- 1,000 - 1,999.99
- >2,000

***Shown for a high and low current regime on a flood (northwards) and ebb (southwards) tide**

Notes

Esri, Intermap, NASA, NGA, USGS, OceanWise, Esri, GEBCO, Garmin, NaturalVue, Esri, CGIAR, USGS, Sources: Esri, TomTom, Garmin, FAO, NOAA, USGS, © OpenStreetMap contributors, and the GIS User Community. Contains Ordnance Survey data © Crown copyright and database rights (2022). OS OpenData.

Coordinate System:

ETRS 1989 UTM Zone 30N

0 3 6 km

0 1.5 3 nm

Scale	Date	Drawn By	Checked By	Approved By
1:150,000 @ A3	16/02/2026	GB	AK	LK

Suites B2 & C2
Higher Mill
Higher Mill Lane
Buckfastleigh
Devon
TQ11 0EN
www.gobeconsultants.com
+44 (0)1626 323890



Figure Number 6.28

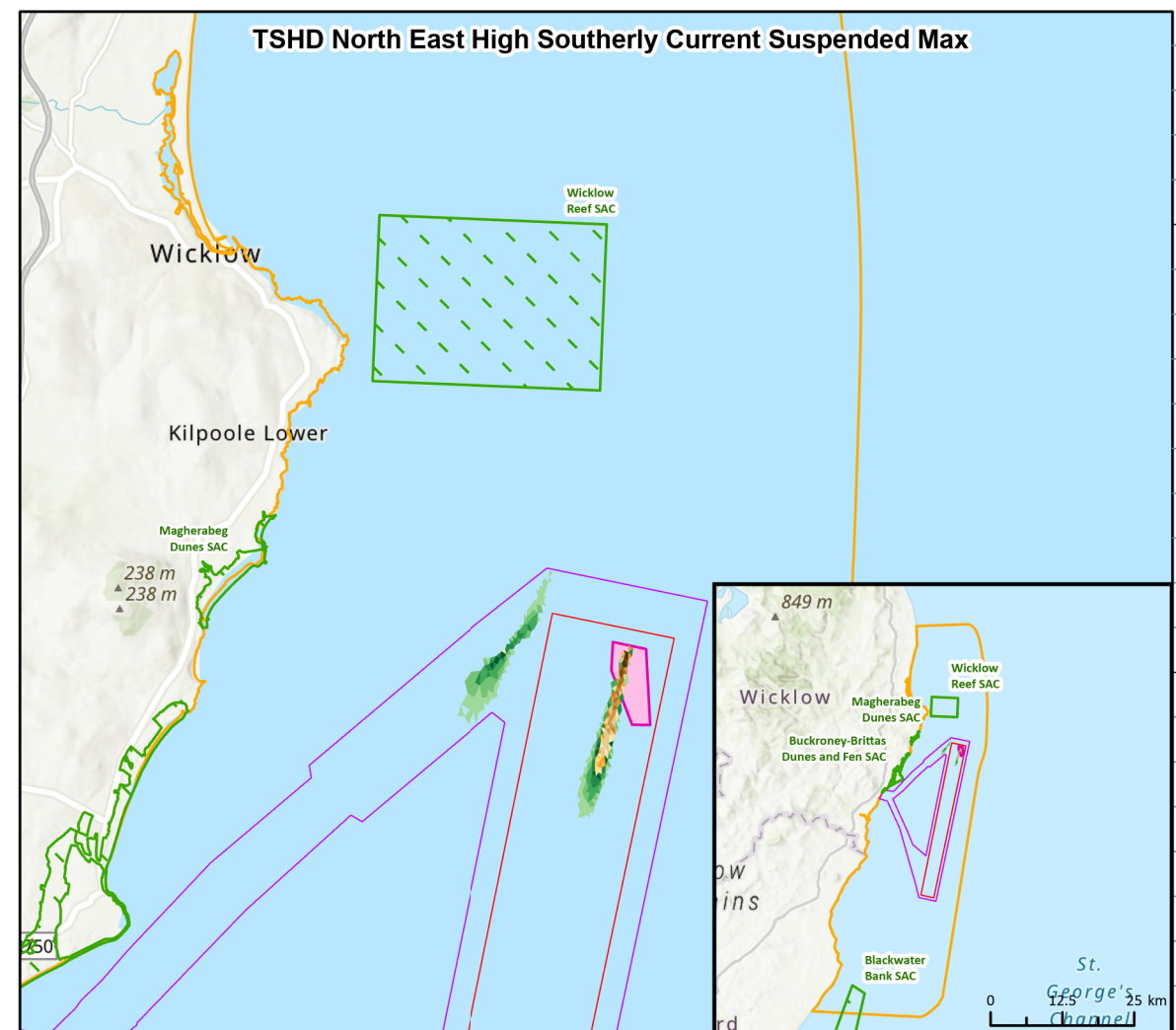
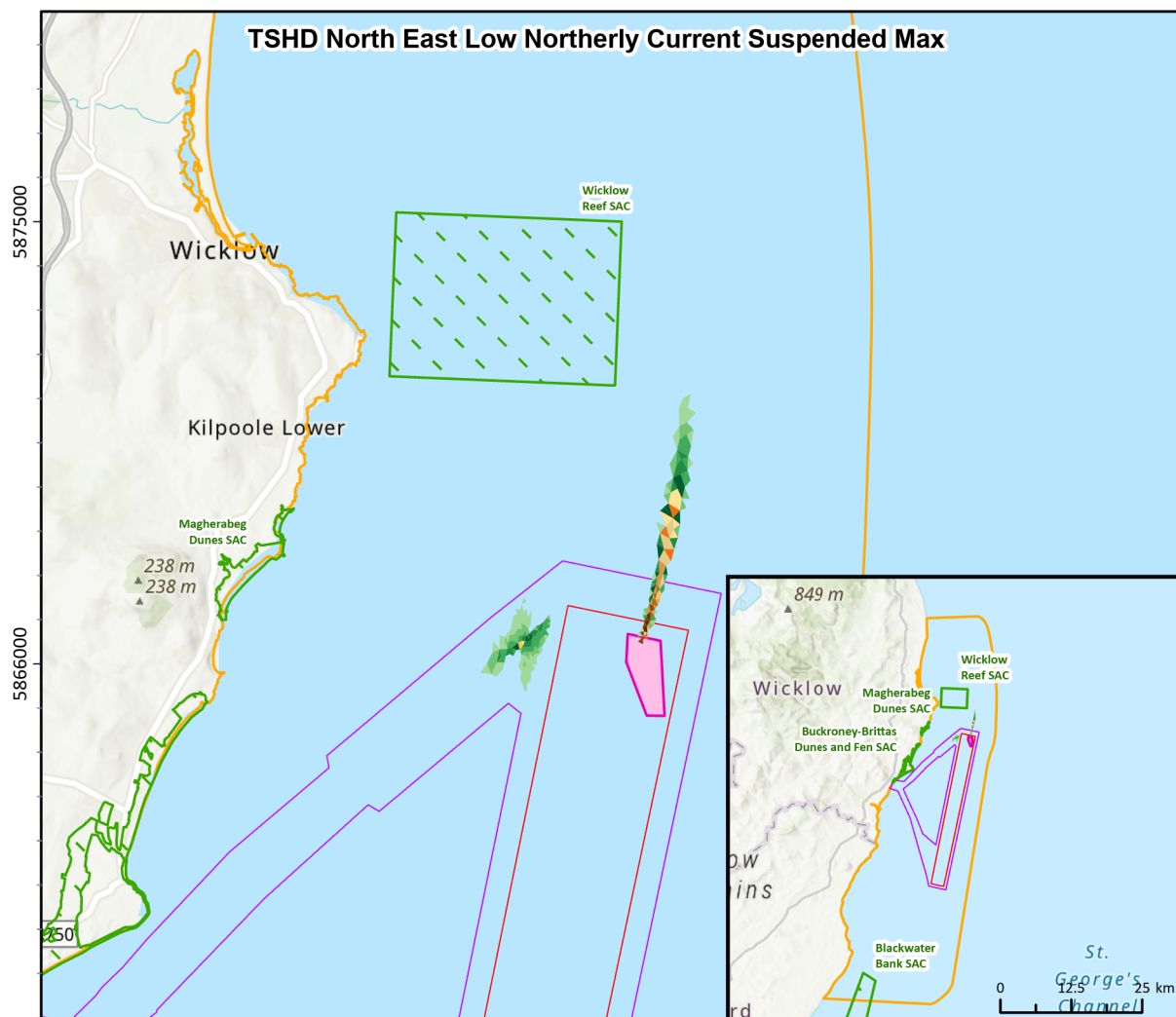
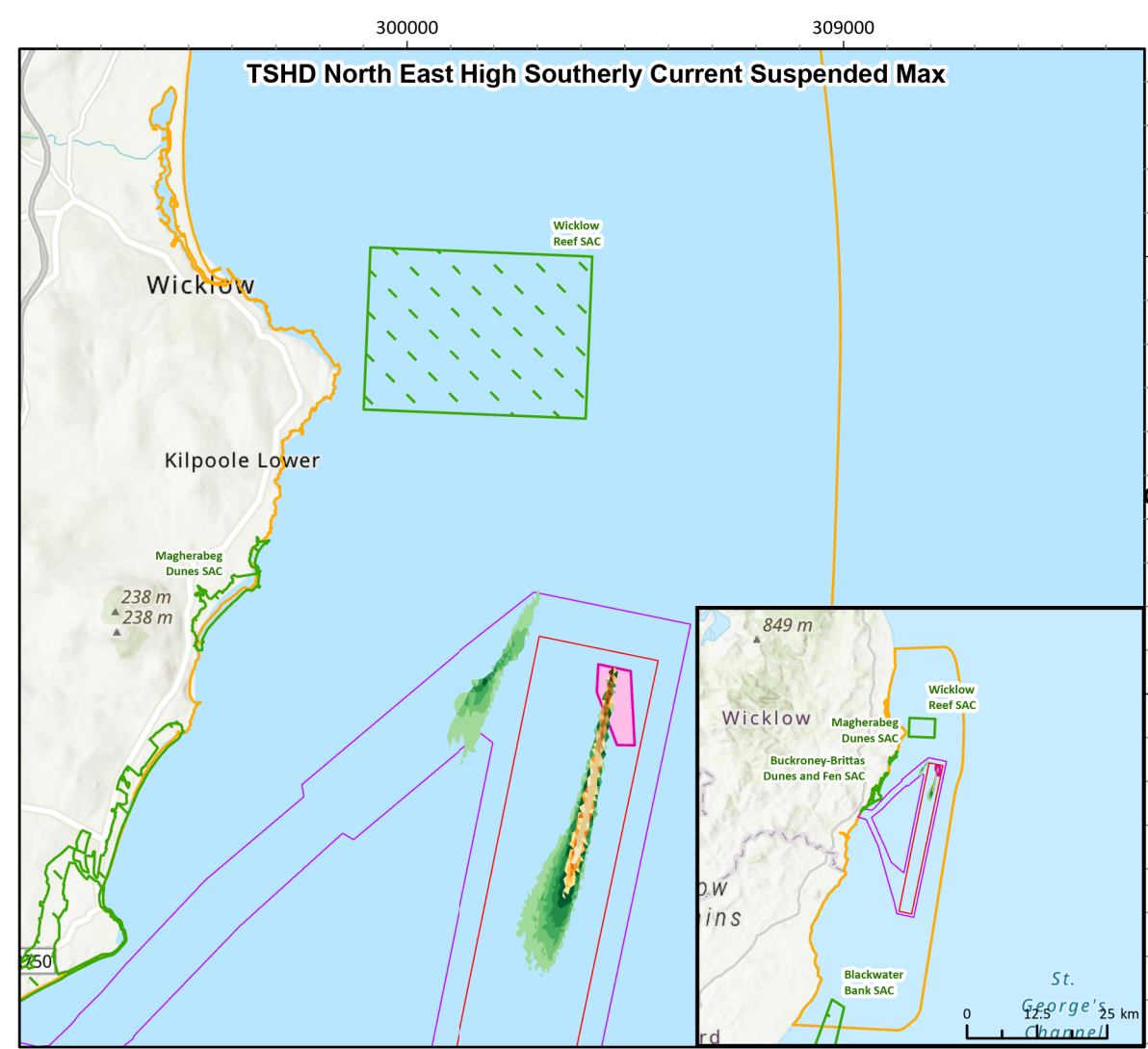
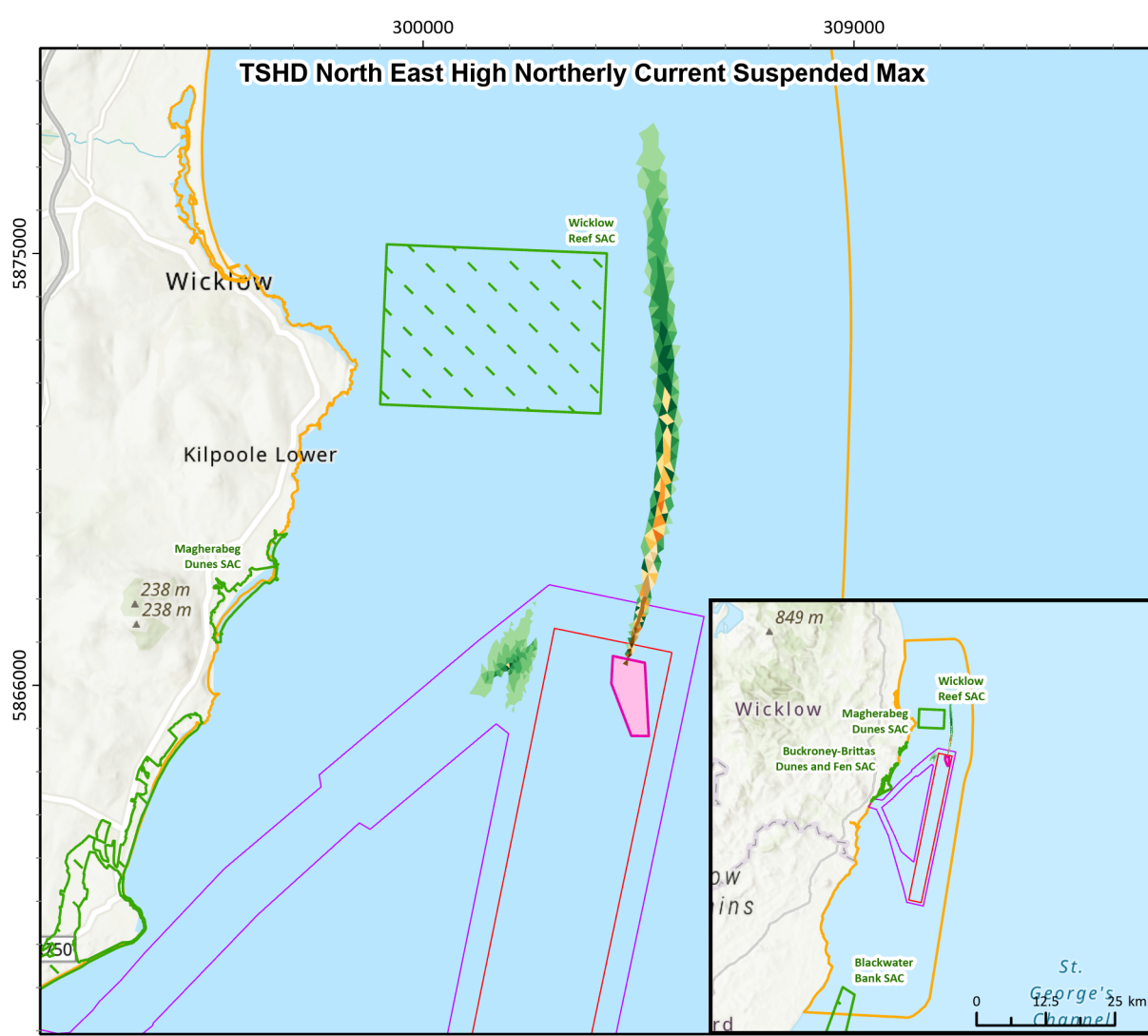


Figure Reference: Ark_Fig6.28_SuspendedSediment_ExportCable_Zone5